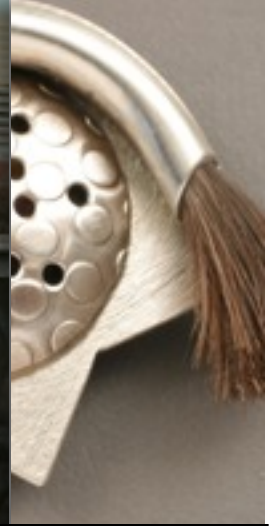




Little Spokane River Artist Studio Tour

A River's Flow / April 2010



www.LittleSpokaneStudios.com

Spring bulbs are bursting forth in the gardens and on the riverbanks of the Little Spokane River Valley. The artists of the Studio Tour are also brimming with creative new ideas, and have begun planning for the 2010 Tour.

Mark your calendars for Tour Day ~ SATURDAY, SEPTEMBER 25th.

Our website www.LittleSpokaneStudios.com will be updated in June with names of this year's participating artists, and an expanded list of links to interesting information about visual arts. The menu there already includes [Craft in America](#), the [Studio Tour Photo Album](#), and [Friends of the Little Spokane River Valley](#). You can also download past copies of this newsletter.

And here is what some of our artists will be doing this spring:

A River's Flow: The Little Spokane River Artist Studio Tour Newsletter

Previous and Future Happenings!

Studio Tour Hosts **Hulda and Ken Bridgeman** are exhibiting at three national juried craft shows this spring: The American Craft Council Shows in Baltimore, Atlanta and St. Paul. The jacket shown below is from their current line, of digitally printed silk. You can see their large printer and learn about the digital process at their studio on the 2010 Tour in September.



www.huldabridgeman.com

Little Spokane River Artist Studio Tour Host, **Patti Osebold**

will be part of the Japan Week Art Events held at the Kress Gallery, Riverfront Park Square, Spokane, WA, on First Friday, April 2nd and again at the opening ceremonies on April 17th.

Patti will also be one of the featured artists the month of May at Quality Floors and Interiors, Spokane, WA
www.pattiosebold.com



Above: **Patti Osebold**, "Toru and Robins," story telling figure made from clay, cloth and hand made papers from Japan, 6" x 8" x 6"



Tour participant, **Cheryl DeGroot**, just finished participating in the "Rags" show held in Tacoma. This show has shared 33% of its proceeds for the last 16 years with the YMCA Women's Shelter of Tacoma, WA. www.cheryldegroot.com

Left: Brooch, sterling silver and horse hair

This spring, Tour participant, **Sheila Evans** won an honorable mention in the Pastel Journal's *Pastel 100 Competition* / "Pastel Journal" March/April Issue.

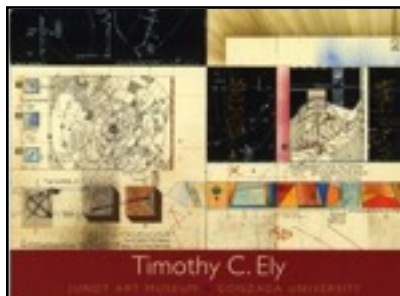
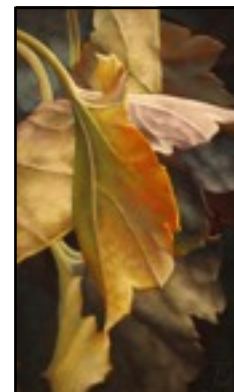
She is the featured artist at the Kress Gallery, Riverpark Square, Spokane, WA for May and June. Sheila will be showing all Oil Paintings.

A busy girl, Sheila is also participating in the May, *Art in the Square Festival*, Belleville, IL and in July, the *Bellevue Arts Museum ArtsFair*, Bellevue, WA.

www.sheilaevans.net

Left Image: **Sheila Evans**
"Frost Line"
Oil on Canvas
36" x 21"

Right Image: **Sheila Evans**
Pastel 100
Honorable Mention
"Horizon Study"
14"x 24"



www.timothyely.com

Tour participant, **Timothy Ely** recently opened an exhibit entitled "*Secret Order*" at the Jundt Museum's Arcade Gallery, Gonzaga University, Spokane, WA. This exhibit featuring eight folios of two upcoming manuscripts will run through July 31, 2010.

Timothy will also be offering two workshops, "*Thoughts and Actions*," and "*More Thoughts and Actions*," this summer in Colfax, Washington. The workshops will include, among a much longer list, book structure, surface design, cloth mounting and using a sketchbook for documentation and idea development. The fee for his workshops includes all basic materials, lunch, snacks and socializing evening events at his home. For more details, and to request the workshop PDF, email Timothy at t.ely@mac.com.



www.victoriabrace.com

Victoria Brace,
Oil on canvas
"Monroe Street Bridge",
30" x 40",
Art Spirit Gallery, CDA, ID
www.theArtSpiritGallery.com

Little Spokane River Artist Studio Tour Host, **Victoria Brace**, will be participating in the spring show "*New Works by 12 Artists*," at the Art Spirit Gallery of Fine Art in Coeur d'Alene, Idaho.

Tour participants: **Harold Balazs** and **Timothy Ely** will also be participating in the April exhibit "*New Works by 12 Artists*" at the Art Spirit Gallery of Fine Art, CDA, ID.

Tour participant, **Gordon Wilson**, will be traveling to France with his students from Whitworth University, Spokane, WA, from April 10 - May 4. He will then travel to the South of France until June 4th to paint, staying in Vence, France with sculptor, Jim Ritchie.

Gordon will arrive back in Spokane in time to participate as one of the five invited artists in the "Drawn to the Wall" exhibit at Gonzaga University, Spokane, WA.



Tour Host **Gina Freuen** has spent January to March restructuring her studio space with an agenda to go full steam creatively towards the fall studio tour and several feature exhibits at the end of 2010. She is looking forward to sharing her better organized workspace with all those who attend the September Tour. Gina is also traveling with her work to Drain, OR and Bremerton, WA in May and June to help fire a pair of beautiful Anagama wood kilns. The work from these firings will be featured in Fall 2010 and Spring 2011 exhibits.

www.ginafreuen.com

Tour participant, **Collista Bejjani** is exhibiting work at the Tin Man Gallery and Artisans' Ware in Spokane, WA. She is currently working with Dixie Fairbanks and the Richard Fairbanks American Pottery Association to reproduce some of Richard's work for his upcoming post-mortem show at the Seattle Art Museum, Seattle, WA.. These reproduced works are to be sold in the S.A.M. gift shop.



Tour participant, **John Blessent** is currently exhibiting his jewelry at the [Tinman Artworks Gallery](http://www.tinmanartworks.com), and Pottery Place in Spokane, WA.

Tour participant, **Rhea Giffin** is the April featured artist at The Bank Left Gallery in Palouse, WA. www.bankleftgallery.com

She also has been invited along with other local artists to create a mask to be auctioned for "*FACES OF HOPE*," A Benefit to Strengthen Families in support of ICARE of St. Vincent de Paul, child abuse prevention in Kootenai County, May 7th at the Art Spirit Gallery in Coeur d'Alene, ID. Of special note, Rhea was recently chosen to be included in Lark Book's upcoming publication "*500 Cabinets*" due to appear in bookstores sometime in the summer of 2010. (picture to left: Rhea sculpting with Papier Mache'.)

<http://www.RheaGiffin.com> <http://www.RheaArt.com/blog>

